



Sp Steel 20

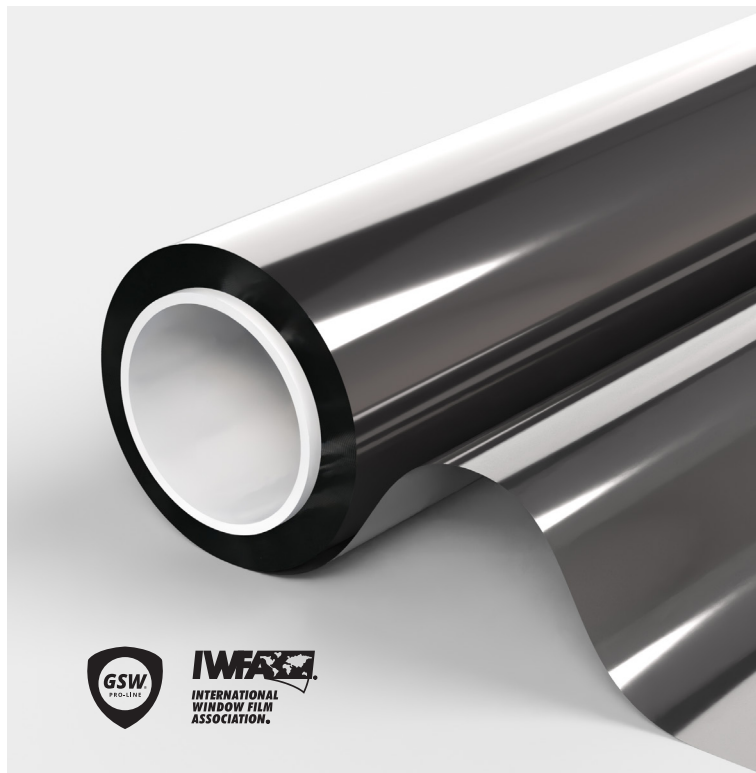
Sun protection privacy film Internal

SKU: RZ1514

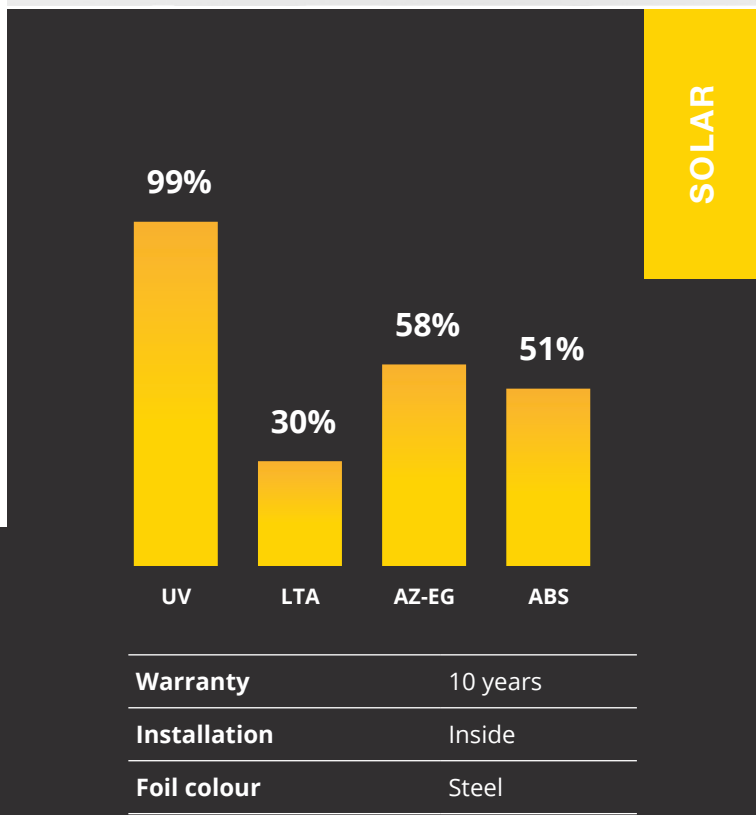
GSW® Sp Steel 20 keeps solar heat to a minimum and at the same time guarantees a maximum of natural light. The reflection of light is significantly reduced and because the film functions as a one-way mirror, you have no onlookers and the exterior of a house or building gets a modern look.

Features:

- Blocks infrared Normal.
- Creates an attractive appearance on the facade.
- Ideal against prying eyes during the day.
- Glass gets a longer lifespan.
- Steel glass look.
- Quiet window film.



PRODUCT PERFORMANCE	
UV protection	99%
Light transmission	30%
Reflection of visible light outside	25%
Reflection of visible light inside	20%
Reflection of solar energy	23%
Absorption of solar energy	51%
Transmission of solar energy	26%
Reduction of reflection	65%
Sun transmission	39%
Rejected solar energy single glazing	58%
Rejected solar energy double glazing	61%
G-value	0.32
U-value single	5.65
U-value double	
Shade coefficient	0.3



PROFESSIONAL WINDOWFILM
VISIT GSWFILM.COM

Contact sales +31 (0)299-323122 info@gswfilm.com

Sp Steel 20

Sun protection privacy film Internal

SKU: RZ1514

GLASS TYPES	SUITABLE
Clear single pane	Yes
Tinted single pane	Yes
Reflective tinted single pane	Yes
Clear double pane	Yes
Tinted double pane	No
Reflective tinted double pane	No
Gas-filled double pane - Low E	No
Stadip ext. clear double pane	No
Stadip int. clear double pane	No
Triple glazed	No
Acrylic 4 mm	Yes
Polycarbonate 4 mm	No

PRODUCT FEATURES	
Width(s)	152 cm
Length(s)	30 meters
Film thickness	50 μ
Material	PET
Storage period	3 years
Storage temperature	-5 °C to '+40 °C
Fire class	EN13501-1
Manufacturer	

Installation

Install the film with water and green Fairy dishwashing liquid. Under no circumstances use chemicals!

Maintenance

Do not clean the window film or attach stickers or other adhesives for at least 1 month after installation. The film can then be cleaned with water and green Fairy dishwashing liquid. Be careful not to use chemicals!

*Recommendations based on a glass surface of max. 2.5 m2. Contact us for further information.

U-value

The lower the U-value, the better the thermal resistance of the foil, with less heat being lost to the outside.



1. Hard scratch-resistant layer for long life and ease of maintenance when cleaning the windows.
2. Optically high-quality polyester, with metal particles against IR radiation.
3. Self-adhesive glue, glass polymerization within 15 days.
4. Protective film, disposable after installation.

PROFESSIONAL WINDOWFILM
VISIT **GSWFILM.COM**

GSW accepts no liability for administrative errors and reserves the right to change information without prior notice. This document does not create, specify, modify or replace any new or existing contractual obligations agreed between GSW and the user. Data calculated on the basis of film on clear glass of 3 mm thickness (*on double glass 4-16-4). GSW® is a registered trademark of Glass Solution Windowfilm B.V. ©2024 GSW



FREE SAMPLE