



# RS 20 Extern

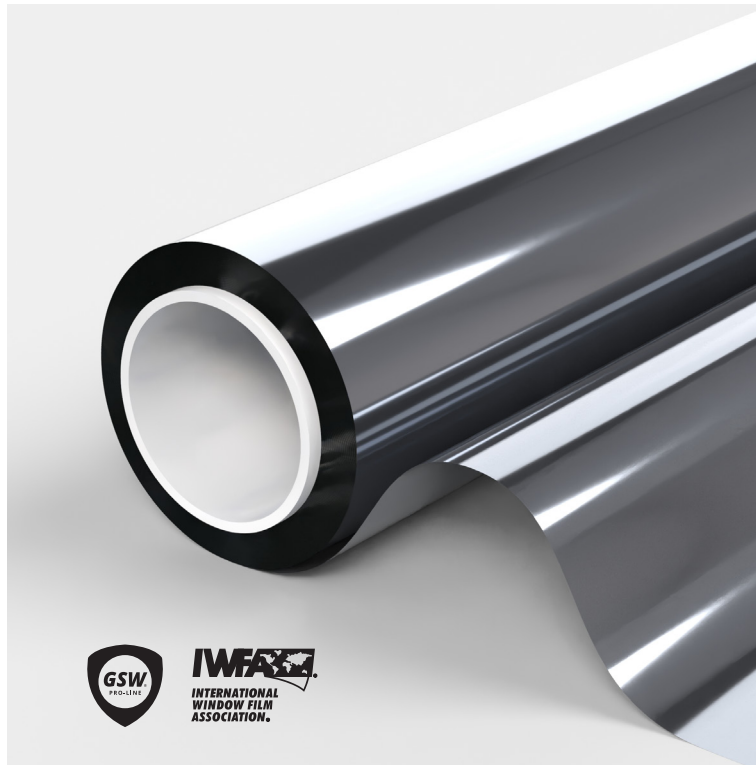
Sun protection privacy film External.

SKU: REZ1801

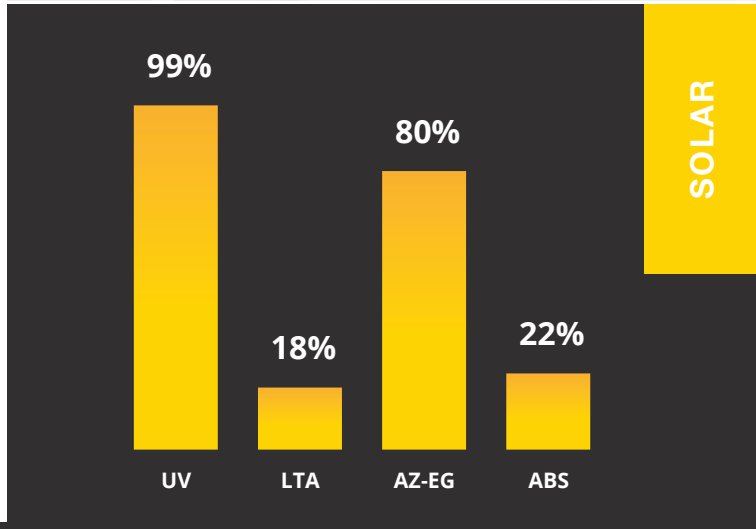
**GSW® RS 20 Externally, sun protection is kept to a minimum and at the same time a maximum of natural light incidence is guaranteed. Light reflection is significantly reduced and because the film functions as a one-way mirror, you have no view in and the exterior of a house or building gets a modern look.**

### Features:

- Blocks infrared High.
- Creates an attractive appearance on the facade.
- Ideal against prying eyes during the day.
- Glass will have a longer lifespan.
- Silver glass look.
- View from inside to outside.



PRODUCT PERFORMANCE	
UV protection	99%
Light transmission	18%
Reflection of visible light outside	60%
Reflection of visible light inside	59%
Reflection of solar energy	63%
Absorption of solar energy	22%
Transmission of solar energy	15%
Reduction of reflection	82%
Sun transmission	15%
Rejected solar energy single glazing	80%
Rejected solar energy double glazing	85%
G-value	0.16
U-value single	5.1
U-value double	
Shade coefficient	0.2



Warranty vertical*	3 years
Warranty horizontal*	no
Installation	outside
Foil colour	Silver
Foil colour inside	

\* Window film under cover strip or use tested Bloem® sealing products.

**PROFESSIONAL WINDOWFILM**  
**VISIT [GSWFILM.COM](http://GSWFILM.COM)**

Contact sales +31 (0)299-323122 [info@gswfilm.com](mailto:info@gswfilm.com)

# RS 20 Extern

Sun protection privacy film External.

SKU: REZ1801

GLASS TYPES	SUITABLE
Clear single pane	Yes
Tinted single pane	Yes
Reflective tinted single pane	Yes
Clear double pane	Yes
Tinted double pane	Yes
Reflective tinted double pane	Yes
Gas-filled double pane - Low E	Yes
Stadip ext. clear double pane	Yes
Stadip int. clear double pane	Yes
Triple glazed	Yes
Acrylic 4 mm	Yes
Polycarbonate 4 mm	no

PRODUCT FEATURES	
Width(s)	122, 152 and 183 cm
Length(s)	30 meters
Film thickness	50 μ
Material	PET
Storage period	3 years
Storage temperature	-5 °C to +40 °C
Fire class	EN13501-1
Manufacturer	

\*Recommendations based on a glass surface of max. 2.5 m2. Contact us for further information.

## U-value

The lower the U-value, the better the thermal resistance of the window film, meaning less heat is lost to the outside.

## Installation

Install the film with water and green Fairy dishwashing liquid. Under no circumstances use chemicals!

## Maintenance

Do not clean the window film or attach stickers or other adhesives for at least 1 month after installation. The film can then be cleaned with water and green Fairy dishwashing liquid. Be careful not to use chemicals!



1. Hard scratch-resistant layer for long life and ease of maintenance when cleaning the windows.
2. Optically high-quality polyester, with metal particles against IR radiation.
3. Self-adhesive glue, glass polymerization within 15 days.
4. Protective film, disposable after installation.

**PROFESSIONAL WINDOWFILM**  
VISIT [GSWFILM.COM](https://www.gswfilm.com)

GSW accepts no liability for administrative errors and reserves the right to change information without prior notice. This document does not create, specify, modify or replace any new or existing contractual obligations agreed between GSW and the user. Data calculated on the basis of film on clear glass of 3 mm thickness (\*on double glass 4-16-4). GSW® is a registered trademark of Glass Solution Windowfilm B.V. ©2024 GSW

Glass Solution Windowfilm B.V. Schepnetstraat 3a, 1446 AL Purmerend +31 (0)299-323 122 info@gswfilm.com



**FREE SAMPLE**