



# Nano 50

Car window film

SKU: RNN0505

GSW® Nano series is specially designed for tinters who prefer a thinner window film for installation speed. Infrared nanoparticles are specially designed for car window tinting and guarantee the highest quality levels in their application and performance.

**Features:**

**Blocks infrared well.**

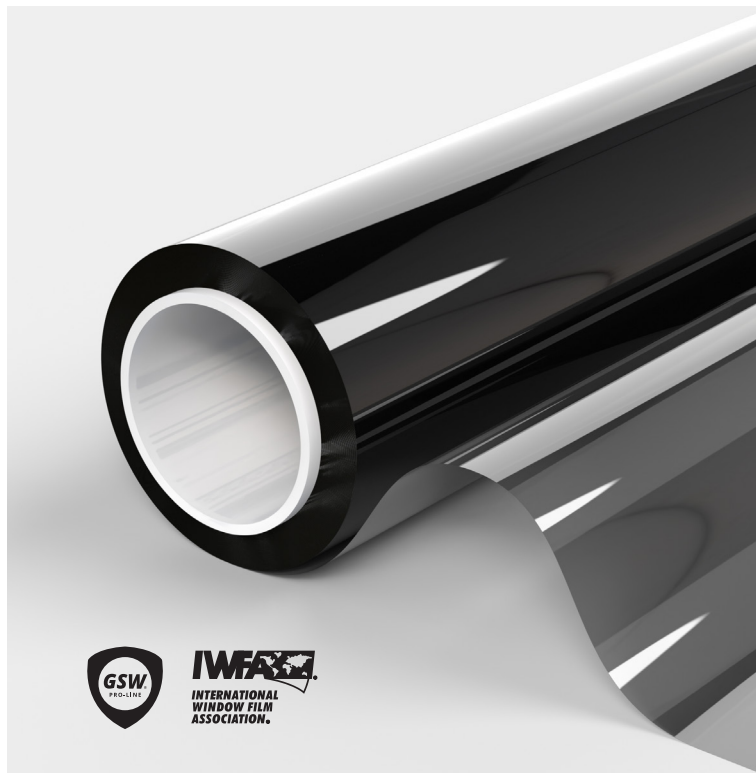
**Extremely fast blow-dryable advice Plexus® Spray.**

**Nano-particle heat shielding system.**

**Thinnest film, faster to install.**

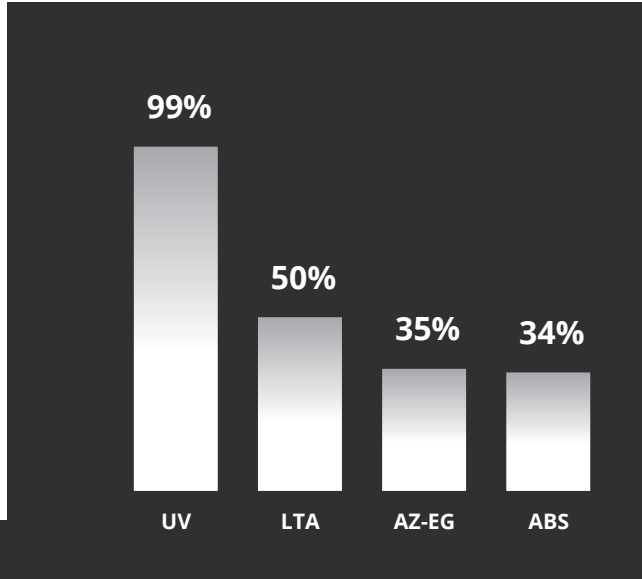
**Blocks 99% UV.**

**Radio and GPS friendly.**



**PRODUCT PERFORMANCE**

UV protection	99%
Light transmission	50%
Reflection of visible light outside	8%
Reflection of visible light inside	7%
Reflection of solar energy	6%
Absorption of solar energy	34%
Transmission of solar energy	60%
Reduction of reflection	50%
Sun transmission	65%
Rejected solar energy single glazing	35%
Rejected solar energy double glazing	34%
Infrared rejection (760-2500 nm)	-



**AUTO**

<b>Warranty</b>	5 years
<b>Installation</b>	inside
<b>Foil colour</b>	Black

**PROFESSIONAL WINDOWFILM  
VISIT [GSWFILM.COM](http://GSWFILM.COM)**

Contact sales +31 (0)299-323122 [info@gswfilm.com](mailto:info@gswfilm.com)



# Nano 50

Auto raamfolie

SKU: RNN0505

GLASS TYPES	SUITABLE
Clear single pane	Yes
Tinted single pane	Yes
Reflective tinted single pane	NB!
Clear double pane	no
Tinted double pane	no
Reflective tinted double pane	no
Gas-filled double pane - Low E	no
Stadip ext. clear double pane	no
Stadip int. clear double pane	no
Triple glazed	no
Acrylic 4 mm	Yes
Polycarbonate 4 mm	no

PRODUCT FEATURES	
Width(s)	51, 76, 101 and 152 cm
Length(s)	30 meters
Film thickness	1
Material	Polyester
Storage period	3 years
Storage temperature	-5 °C to '+40 °C
Fire class	EN13501-1
Manufacturer	

**\*Recommendations based on a glass surface of max. 2.5 m2. Contact us for further information.**

## Maintenance

Do not clean the window film or attach stickers or other adhesives for at least 1 month after installation. The film can then be cleaned with water and green Fairy dishwashing liquid. Be careful not to use chemicals!

## Supershrink

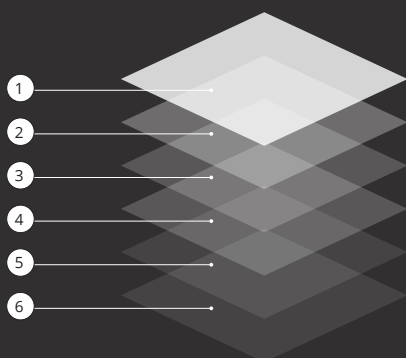
GSW® auto window films are made with Super Shrink substrates and patented anti-static technology for effortless dry shrink and faster, cleaner installations. Exterior PET protective layer from 270° degrees with digital Heatgun.

## Plotter friendly

GSW® window films are an ideal choice for tinters who use a plotter to cut vehicle patterns. They cut easily thanks to the specially designed antistatic protective layer.

## Installation

Install the film with water and green Fairy dishwashing liquid. Under no circumstances use chemicals!



1. Hard scratch-resistant layer for a long life and ease of maintenance when cleaning the windows.
2. Colored polyester without optical distortion, with metal particles against IR radiation.
3. Self-adhesive glue, polymerization with glass within 15 days.
4. Protective film, disposable after installation.

**PROFESSIONAL WINDOWFILM**  
VISIT [GSWFILM.COM](http://GSWFILM.COM)

GSW accepts no liability for administrative errors and reserves the right to change information without prior notice. This document does not create, specify, modify or replace any new or existing contractual obligations agreed between GSW and the user. Data calculated on the basis of film on clear glass of 3 mm thickness (\*on double glass 4-16-4). GSW® is a registered trademark of Glass Solution Windowfilm B.V. ©2024 GSW

Glass Solution Windowfilm B.V. Schepnetstraat 3a, 1446 AL Purmerend +31 (0)299-323 122 info@gswfilm.com



**FREE SAMPLE**

AUTO

V19/11/24